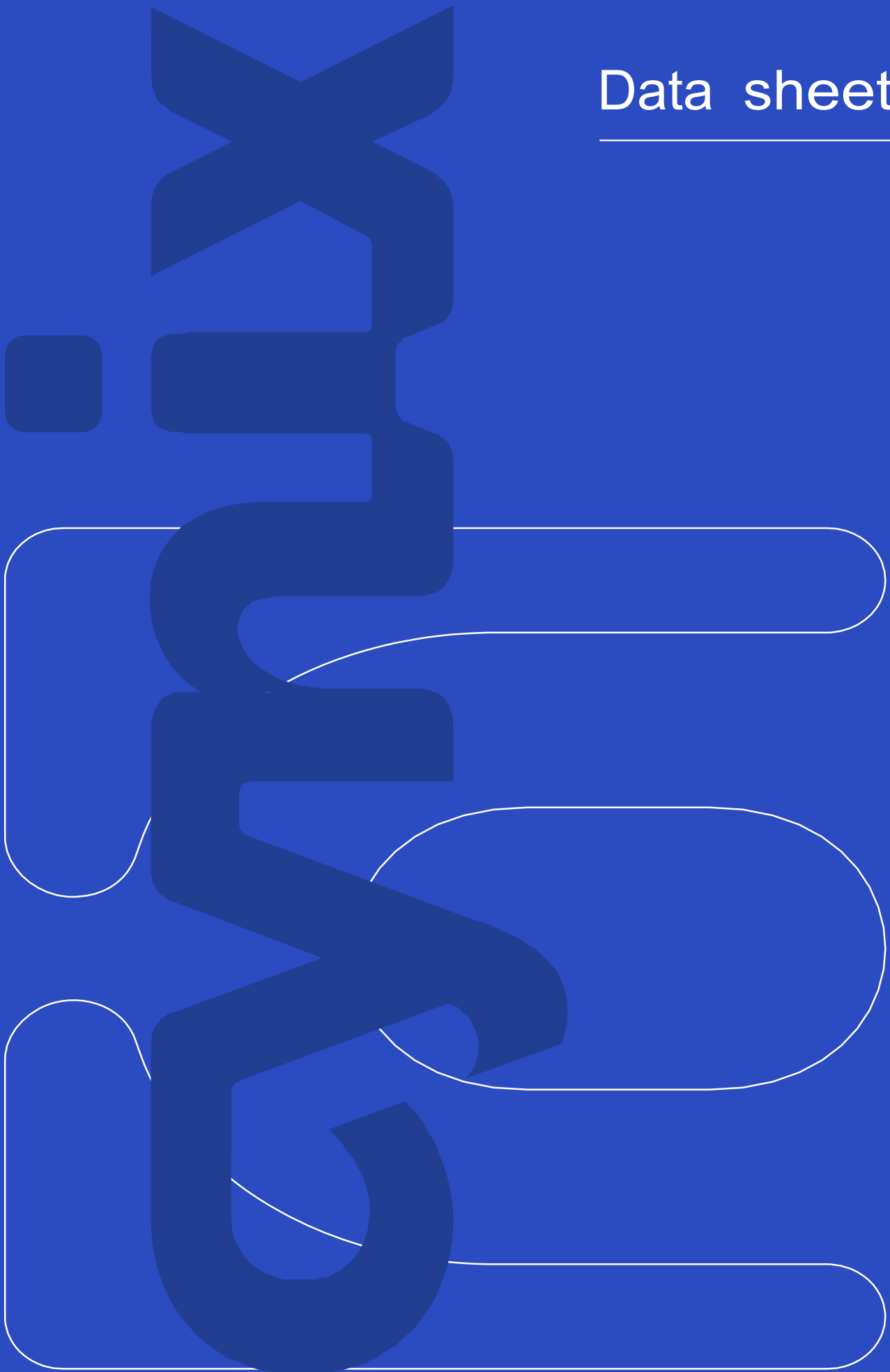


Data sheet

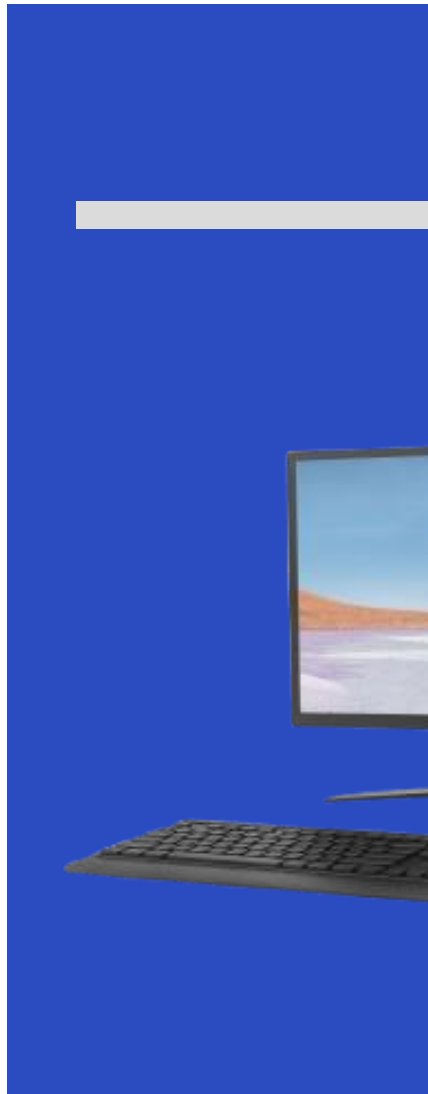




CYNiX GenX iX6030 Micro tower

“ Business Desktops With Efficient
Performance And Ultimate Expandability ”





CYNiX GenX iX6030 Small Form Factor

“ Business Desktops With Efficient
Performance And Ultimate Expandability ”

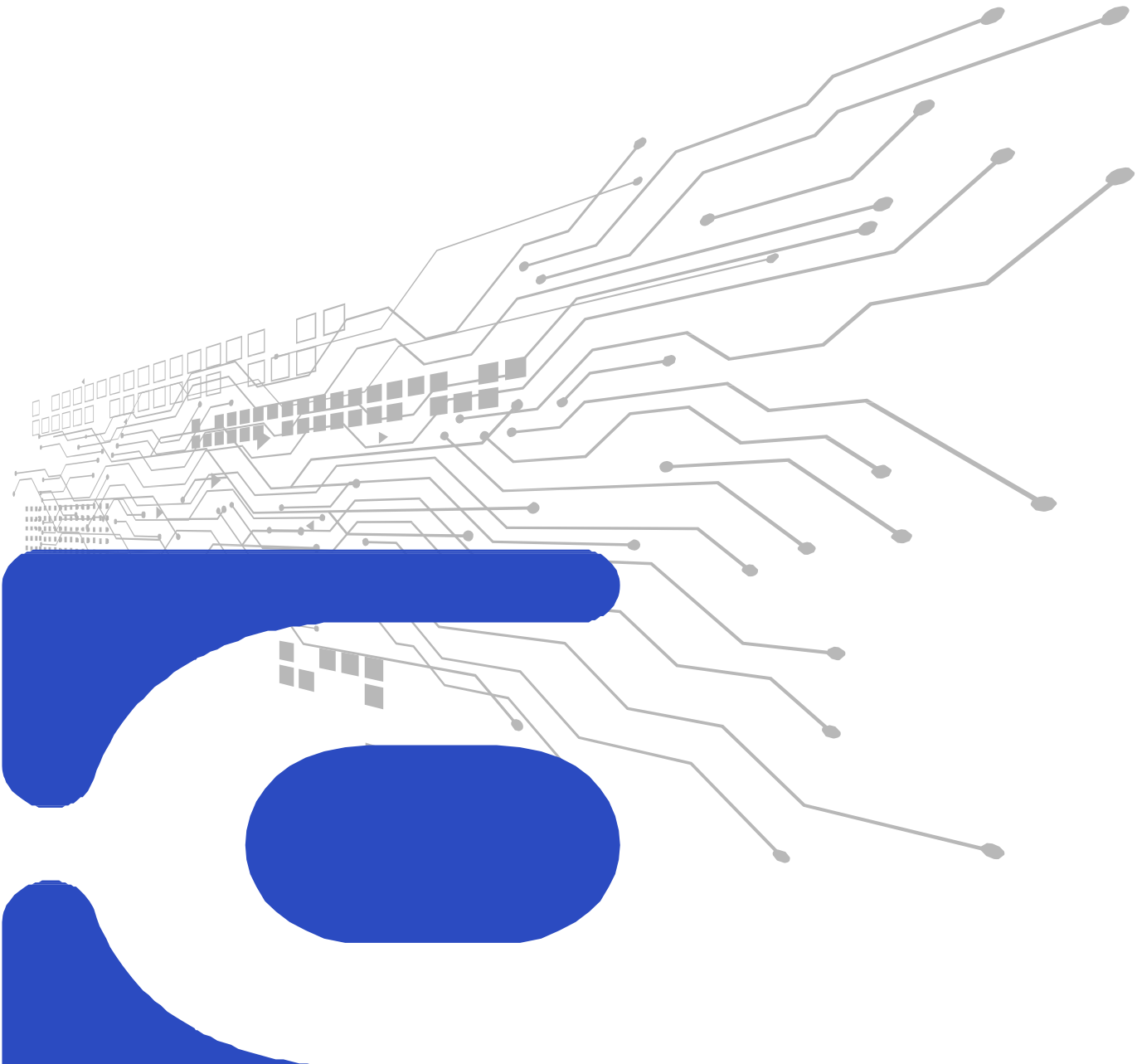


At CYNIX's we create highly effective system to do more with your business with less efforts. We believe in make in India philosophy & our state-of-the-art design centre delivers highly effective quality check at each stage. To deliver best in class products, we choose world class components & deploy sophisticated chassis design. We offer multiples feature alternatives with a wide range of specifications. Our system delivers cutting-edge performance and offers comfort that gives you a wholesome experience & enables you to run smooth business operations.

CYNiX GenX ix6030 Desktop Technical Specifications

Processor	Latest Generation (10th & 11th Gen) AMD Ryzen™ 3 Processor Latest Generation (10th & 11th Gen) AMD Ryzen™ 5 Processor Latest Generation (10th & 11th Gen) AMD Ryzen™ 7 Processor Latest Generation (10th & 11th Gen) AMD Ryzen™ 9 Processor
Chipset	Latest AMD A/B/X and Pro Series
Operating System	Windows 11 Home, 64-bit Windows 11 Pro, 64-bit Windows 11 Pro Education, 64-bit Linux Free DOS
Video Card	Integrated: Radeon™ Graphics Discrete: up to 4GB Discrete Graphic card (AMD/NVIDIA)
Memory	Up to 128GB DDR4-2666 SDRAM; Up to 128GB DDR4-3200 SDRAM Up to 128GB DDR5-4800 SDRAM; Up to 128GB DDR5-5600 SDRAM Up to 128GB DDR5-6600 SDRAM; Up to 128GB DDR5-7800 SDRAM
Memory Slots	2 DIMM or 4 DIMM
Communication	LAN – Gigabit Ethernet WLAN Wireless 2.4Ghz/5 GHz, Wi-Fi (802.11ac) AX211, AX210 AX200 (Optional) Bluetooth 4.2, 5.0, 5.1, 5.2, 5.3 (Optional)
Ports	Front: 2 USB 2.0 1 Universal Audio Jack 2 USB 3.0 (Optional) USB TYPE-C (Optional) Rear: 2 USB 2.0 2 USB 3.2 1 VGA Port/HDMI Port/Display Port 2 USB 2.0 (Optional) 1 Display Port (Optional) 1 Serial Port (Optional) 1 Parallel Port (Optional) 1 RJ45 Ethernet port 2 PS/2 ports 1 Line-out/Line-in audio port
Optical Drive	DVD-ROM DVD+/-RW

Form Factor	Micro Tower Small Form Factor
Drive Bays	One 2.5" HDD; One 3.5" HDD; One 3.5" HDD convertible to one 2.5" HDD
Slots	1x PCIe x16 slot, 2nd PCIe x16 slot (Optional) 1x PCIe x1 slot, 2nd PCIe x1 slot (Optional) 1x PCIe x4 slot (Optional), 1 PCI (Optional) 1 SD-card slot (Optional) M.2 slot for SSD (Optional) M.2 slot for Wi-Fi (Optional) 4 SATA slots for HDD/SSD and Optical Drive
Primary Storage	128 GB up to 2TB SSD Drive 500 GB up to 8 TB SATA 5400/7200 RPM HDD
Productivity Software	Microsoft Office 30 Day Trial Latest Microsoft Office Home and Student (Optional) Latest Microsoft Office Home and Business (Optional) Latest Microsoft Office Professional (Optional)
Warranty	3 Years Hardware Service with Onsite/In-Home Service after Remote Diagnosis, Warranty extensions up to 5 years Accidental Damage Service is available to accompaniment certain warranty options from 3-5 years Keep your hard drive Options Available on certain SKU.
Audio and Speakers	Integrated high-definition audio controller Internal Speaker (Optional)
Power	Tower: 200W high Efficient active PSU 250W, 300W, 300W 92% Efficient active PSU (Optional) Small Form Factor: 200W high Efficient active PSU 250W, 300W, 300W 92% Efficient active PSU (Optional)
Hardware Security	Kensington security-cable slot (Optional) Padlock loop (Optional) Chassis intrusion switch (Optional) TPM 2.0 - Software/Hardware (Optional)
Input devices	CYNiX Wired Keyboard Black (English) - US International CYNiX Wired Mouse Black CYNiX Wireless Keyboard and Mouse (Optional)
Environmental	Operating temperature: 5 to 35°C; Operating humidity: 5 to 90% RH



© Copyright 2022. All rights reserved. In a continuing effort to improve the quality of our products, information in this document is subject to change without notice. Microsoft and Windows are registered trademarks of Microsoft Corporation. Intel®, Pentium, the Intel logo, Intel Core, vPro®, Optane™, and Core Inside are trademarks or registered trademarks of Intel Corporation or its subsidiaries in the United States and other countries. Bluetooth® is a trademark of its proprietor. USB Type-C® and USB-C® are registered trademarks of USB Implementers Forum. Adobe PDF is a trademark of Adobe Systems Incorporated. ENERGY STAR is a registered trademark of the U.S. Environmental Protection Agency. DisplayPort™ and the DisplayPort™ logo are trademarks owned by the Video Electronics Standards Association (VESA®) in the United States and other countries. NVIDIA, the NVIDIA logo, Quadro, and GeForce are trademarks and/or registered trademarks of NVIDIA Corporation in the US. and other countries. AMD and Radeon are trademarks of Advanced Micro Devices, Inc. All other trademarks are the property of their respective owners. All the Pictures are for the illustration Purpose only. Actual product may be vary. T & C Apply



Windows

